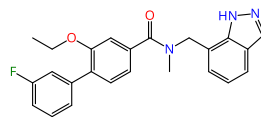


Query compound

BAL-0028

NLRP3 inhibitor

Binds tightly to the NACHT domain of NLRP3. Discovered by DNA-encoded library screening. (Hartman et al., 2024)



All displayed molecules are the best ranking results retrieved with **infiniSee** in the respective modes. The associated similarity score is provided for each entry in the box.

Scaffold Hopper (FTrees): Fuzzy pharmacophore.

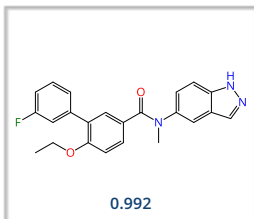
Analog Hunter (SpaceLight): Tanimoto similarity.

Motif Matcher (SpaceMACS): Maximum common substructure.

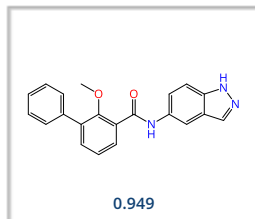


Scaffold Hopper

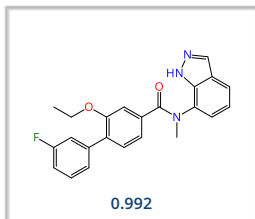
AMBrosia



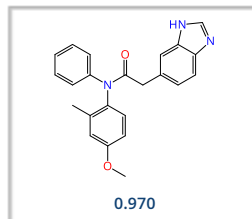
CHEMriya



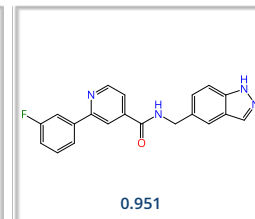
eXplore



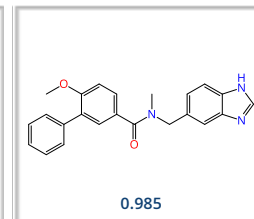
Freedom Space



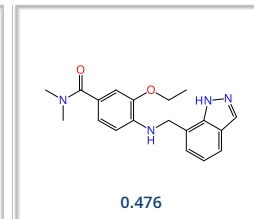
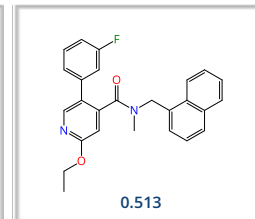
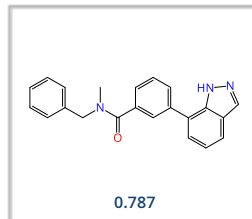
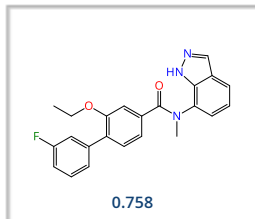
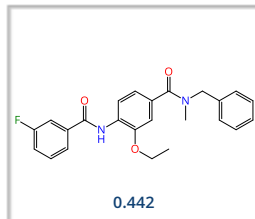
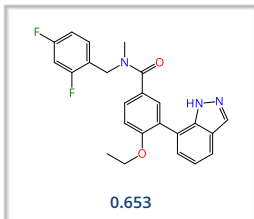
GalaXi



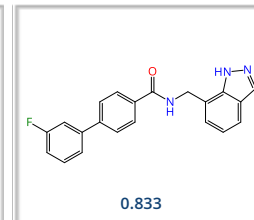
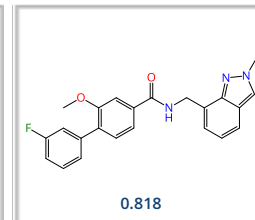
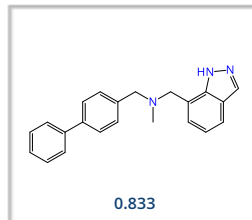
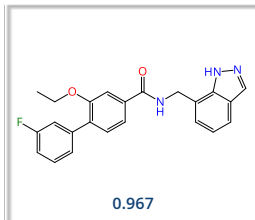
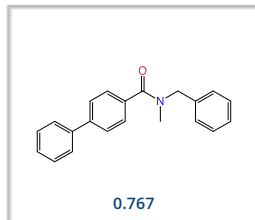
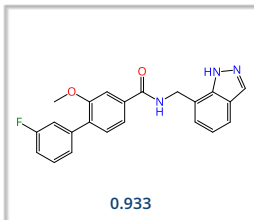
REAL Space



Analog Hunter



Motif Matcher



Mine with **infiniSee** for more compounds from trillion-sized Chemical Spaces.

Visit us for sophisticated drug discovery software solutions:

www.biosolveit.com/infiniSee